

Ship Software OnTime

OnTime 2008



Chosen by over 6,000 development teams around the world



The Best OnTime Ever

With a new integrated project Wiki and over 60 new features



The fast and scaleable team solution for:

- Defect and Issue Tracking
- Feature and Change Tracking
- Task and To-do List Tracking
- Help Desk Ticket Tracking

OnTime 2008 is the only integrated defect tracker, requirements manager and help desk incident tracker on the market.

Specifically designed with an emphasis on helping software development teams to collaborate better and ship software on time.



OnTime 2008
More than just Bug Tracking:
A Project Management Solution

Ship Software OnTime

Features and Functionality

TRACK EVERYTHING

OnTime's core functionality is its ability to track items such as defects, features, requirements, help desk incidents and tasks. Now in its eighth major release, OnTime 2008's user interface has been optimised for ease of use, speed and visibility. Managers, developers, testers and other team members will intuitively understand the way that OnTime organises projects.

PROJECT VISIBILITY

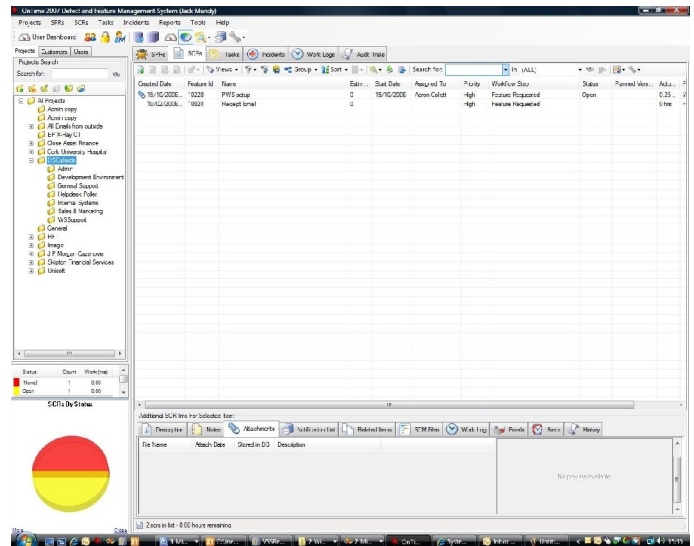
Who's working on what? This is one of the most basic questions every software development team should be able to answer. OnTime's innovative four-pane main window, tabbed content identifiers, hierarchical project view and dashboards provide on-the-spot 360-degree visibility.

NOTIFICATION AND ALERTS

OnTime automatically pushes critical information to the right team members. Additionally, OnTime users can subscribe to email notifications at the item level right on up to the project level. Even customers can receive automatic updates to keep them in the loop with as much or as little information as is deemed necessary.

REPORTING

How well does the rest of your organisation understand the IT department's workload? With OnTime you can provide internal and external customers with an easy-to-understand snapshot of information that is relevant to them. With OnTime you can start off team meetings with all of the data you need to tackle the real issues affecting your projects.



SECURITY

OnTime's security functions help make sure that only authorised users have access to the sensitive information contained in each project. Security also helps to enforce workflow rules, ensuring that the development methodology system you have invested in actually delivers the results it is supposed to.

ATTACHMENTS

OnTime 2008 maintains a library of a limited number of files and images to any tracked items. This includes screenshots, specifications, methodology requirements or any other file/document. These files are stored directly into the database, so any user with appropriate security privileges can access the attachments using any OnTime interface – Windows, Web or VS.NET – locally or remotely.

AUDIT

OnTime tracks all changes to defects and features. This creates a detailed set of audit information that includes the person who made the change, the date and time of the change as well as the details of each change.

**Customisation – Workflow – Importing and Exporting –
Worklog Tracking – Help Desk Ticketing – and much more!**



OnTime 2008
More than just Bug Tracking:
A Project Management Solution